

# SUZUKI TONECHIME HANDBELL SETS

## Now There's a Handbell Set For Your Every Need!!

- HB-25** 25 note chromatic ToneChime handbell set with case. Range  $G_4$  to  $6.G$
- HB-12A** 12 note chromatic add-on set with case. Range  $C_4$  to  $5.C$  Use to expand range of HB-25 to octaves.
- HB-12B** 12 note chromatic add-on set with case. Range  $C_3$  to  $7.C$  Use to expand range of HB-25 and HB-12A to octaves or with any handbell or chime set.
- HB-10** 10 note diatonic set, with  $Bb^\#$ , and carrying case. Range  $C$  to  $7.C$  Use for elementary classroom instruction.
- HB-16** 16 note diatonic set with  $F_2$  and carrying case. Range  $A$  to  $F$ . Use in combination with Orff instrumentariums for dynamic performances.
- HB-3** 3 note bass bell set, with  $G$  Use to enhance cadences and lower rhythm patterns.

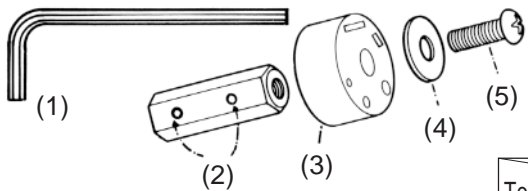
# SUZUKI TONECHIMES

## Handling Instructions

We would like to thank you for purchasing the Suzuki Tone Chime. The following instructions explain how to adjust the tone chime to obtain the tone that you like best. After reading the instructions carefully it is simple, even for a complete beginner, to correctly adjust the tone chime.

### A. SPECIAL PARTS & TOOLS

The special tools and parts provided are not generally available. Be careful not to lose them.

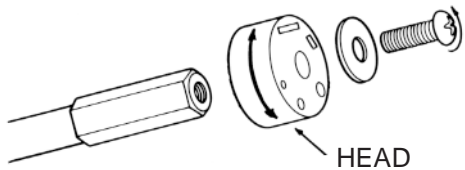


- (1) Allen wrench
- (2) Small screw
- (3) Rubber head
- (4) Washer
- (5) Screw

The tools and parts are contained as following list.

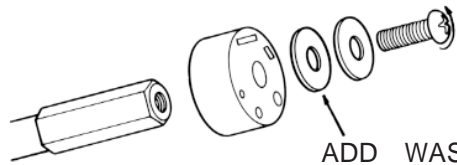
Tools/Parts	Model	HB-25	HB-12A	HB-12B	HB-16	HB-10	HB-3
(1) Allen Wrench		3	3	3	1	1	1
(2) Small Screw		2	2	2	-	-	-
(3) Rubber head Felt Head		1 -	- 1	- 1	- -	- -	- -
(4) Washer 16mm 24mm		5 -	- 5	5 -	- -	- -	- -
(5) Screw 4 × 10mm 4 × 16mm		1 -	- 1	1 -	- -	- -	- -

### B. TO OBTAIN A SOFTER OR HARDER TONE ADJUST THE CLAPPER HEAD



- Using a Phillips screwdriver loosen the Phillips screw as shown in the drawing. Then remove the head and washer.
- Set the head in the desired position.
- Replace the screw and retighten it.

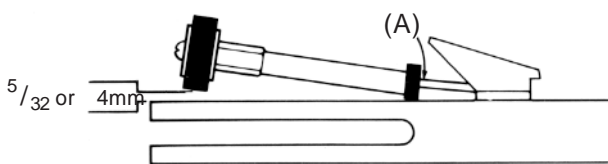
### C. TO GIVE THE HAMMER A HEAVIER ACTION:



- Loosen the Phillips screw fitted in the head, as shown in the drawing.
- Add the specially provided washer.
- Replace and retighten the screw.

By adding the washer the action will become heavier and will be some a little louder.

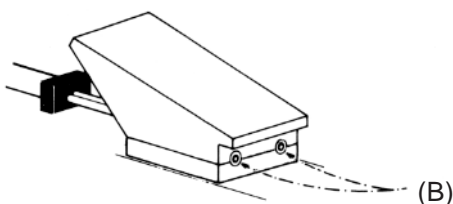
### D. IF THE CLAPPER FAILS TO FULLY HIT THE CHIME BODY, BY SOME CAUSES THE FOLLOWING



- The head is not striking the chime pipe in the correct position.
- The gap between the pipe body and the head is incorrect. (The gap should be 4mm, as shown in the drawing. But, lower notes of HB-12A and HB-12B should be approx. 6mm.)

Make the required adjustment by bending the clapper bar (A) to the correct position.

### E. IF HAMMER MOVEMENT BECOMES TOO LIGHT:



Hammer movement should have an appropriate resistance. After long use hammer movement becomes too light and generates noise. In such a case use the specially provided Allen wrench and evenly tighten the socket nuts marked as in the drawing on the left.